



# TAGHeuer

PROFESSIONAL TIMING

## On screen Speed Display

### User Manual

Version 20.01.2016



This software takes all times from 1 or 2 Chronoprinter 540 and 545 connected on the same Network. Two different sectors can be displayed. Finally the VGA signal can be converted with another device (not supplied) in order to display the information on several TV screens.



## 1. Software installation

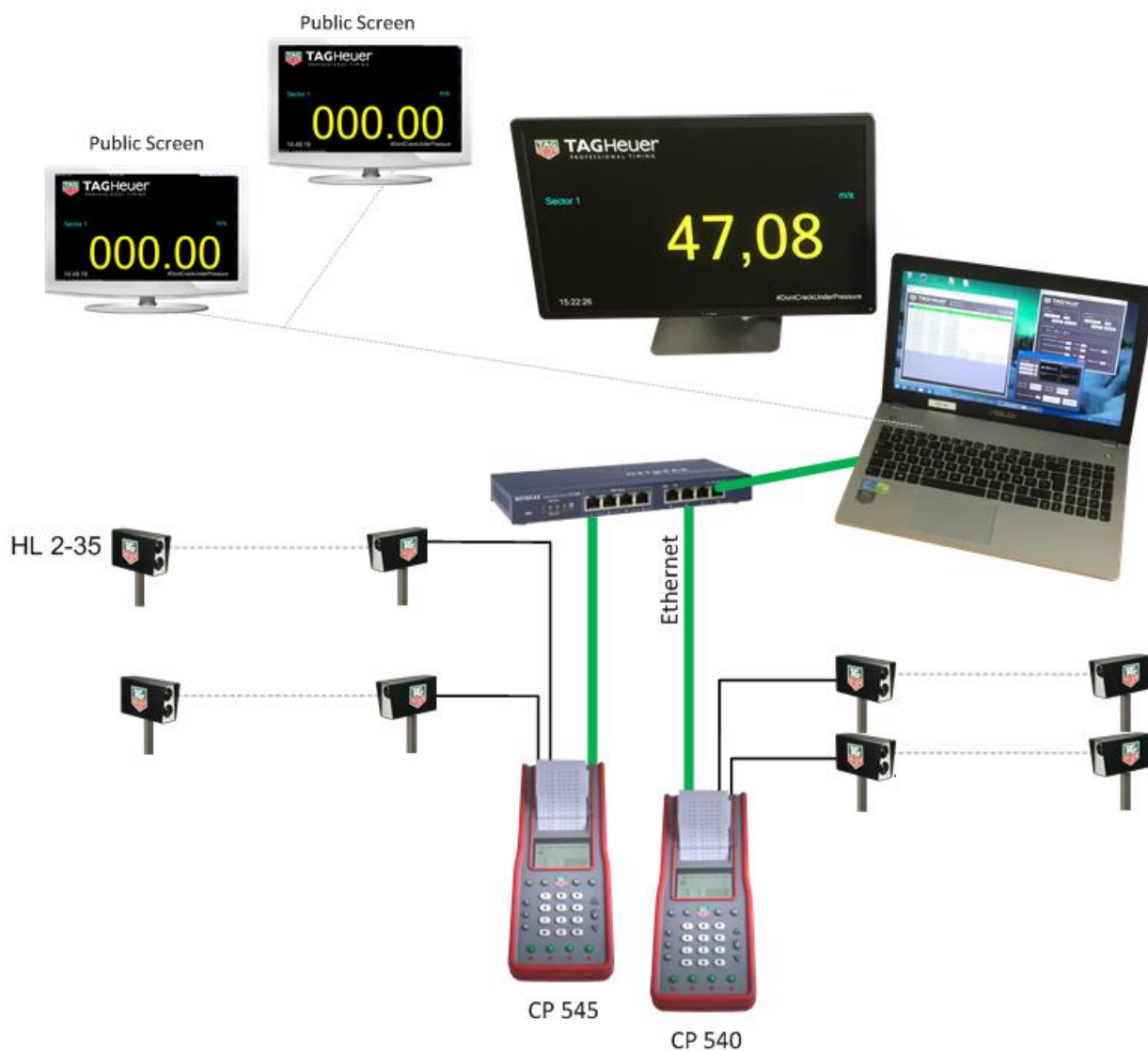
---

No need to install the software, the .exe can be launched on any hard drive

## 2. Hardware installation

---

In order to use the software you need a computer with any Windows OS and a extended desktop screen.

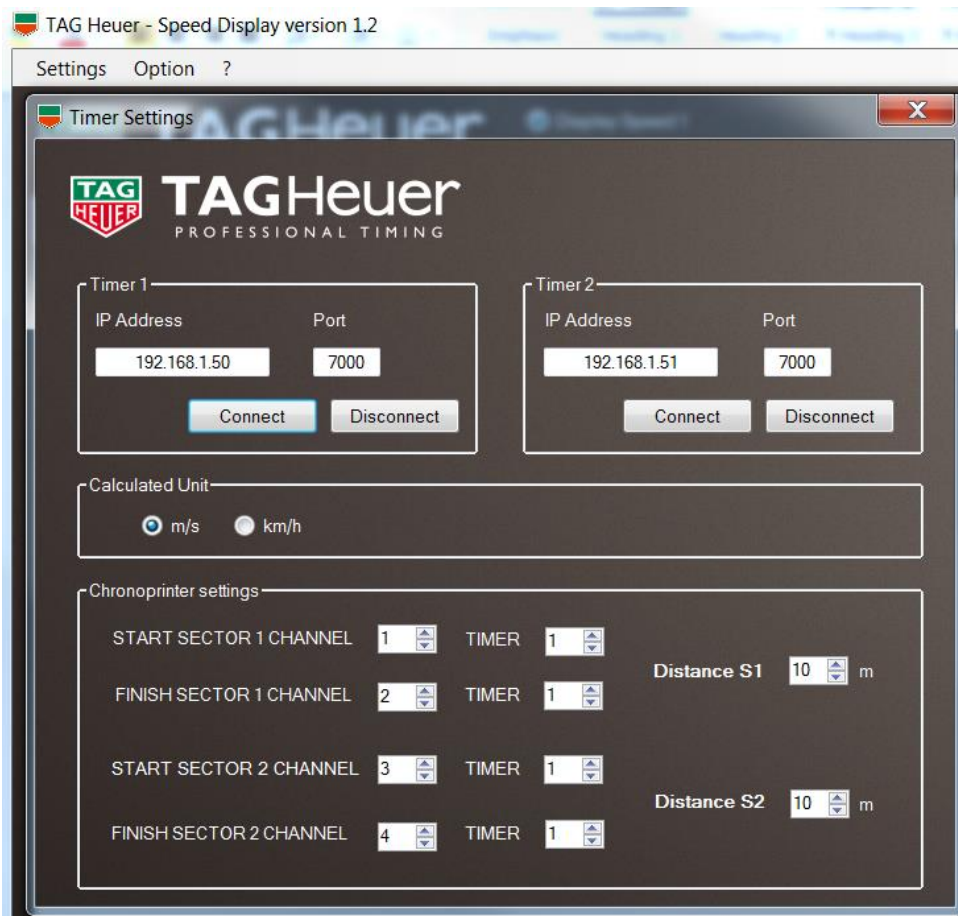


The signal can be converted into any other signal (SD, SDI etc..) in order to be broadcasted on TV.

The Chronprinter needs to be connected over TCP/IP on the same network as the computer.

### 3. Software presentation

#### A) Settings – Timer



Connect one or two Chronoprinter on the same Network.  
Set the IP address of each and click “connect”

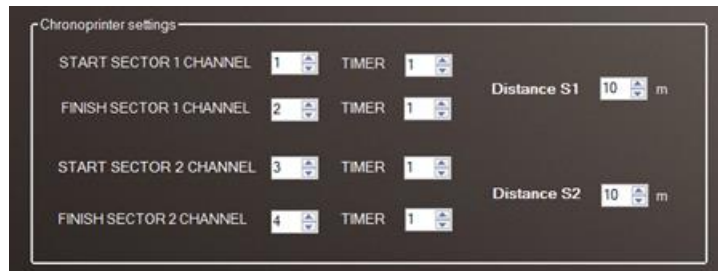
Port number is 7000 by default

Select the unit in m/s (meter per second) or km/h (kilometre per hour)

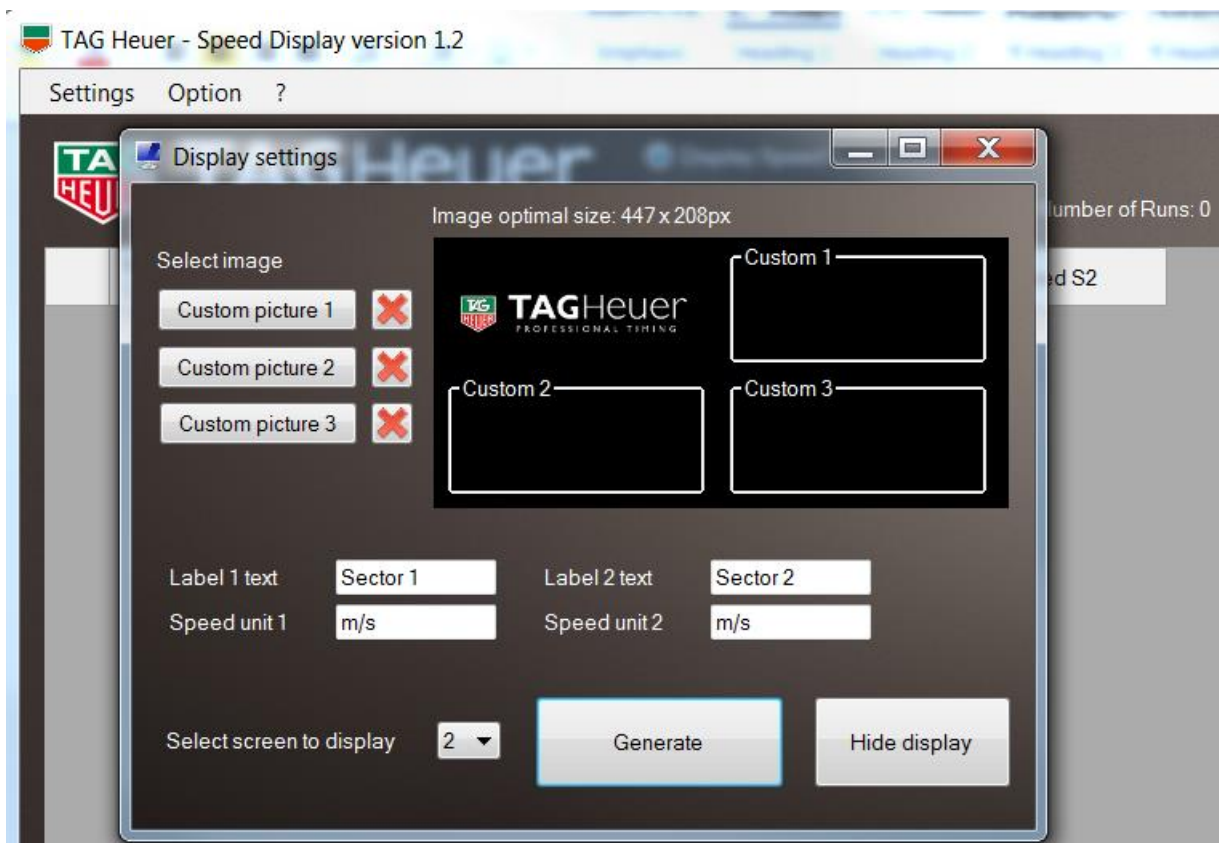


Select the channel which has to be taken in consideration for the speed calculation on each sector and set the distance.

Note that one channel cannot be used for both sectors simultaneously from only 1 timer.



B) Option – Extended display

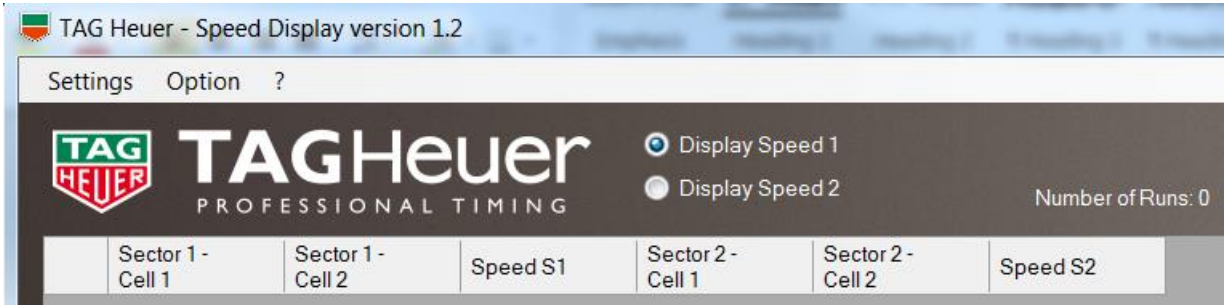


Upload your own sponsor or event logo in each “Custom picture” field.  
 All images are automatically sized to fit on screen.  
 The red cross removes the picture.

Each text can be personalized or even deleted

Select the windows screen to display the info page and click “Generate”

C) Main Window



Until the software has incoming data's, the software will fill the corresponding columns and calculate the speed in m/s or km/h

After some runs, you can empty the datagrid with Option – Clear Datagrid





# TAGHeuer

PROFESSIONAL TIMING

**TAG Heuer**  
**PROFESSIONAL TIMING**

6A Louis-Joseph Chevrolet  
2300 la Chaux-de-Fonds  
Switzerland

Tel : 032 919 8000

Fax : 032 919 9026

E-mail: [info@tagheuer-timing.com](mailto:info@tagheuer-timing.com)

**[Http: //www.tagheuer-timing.com](http://www.tagheuer-timing.com)**

